

2019 Residential Design Expo



Hoffman Landscapes



Race Coastal Engineering

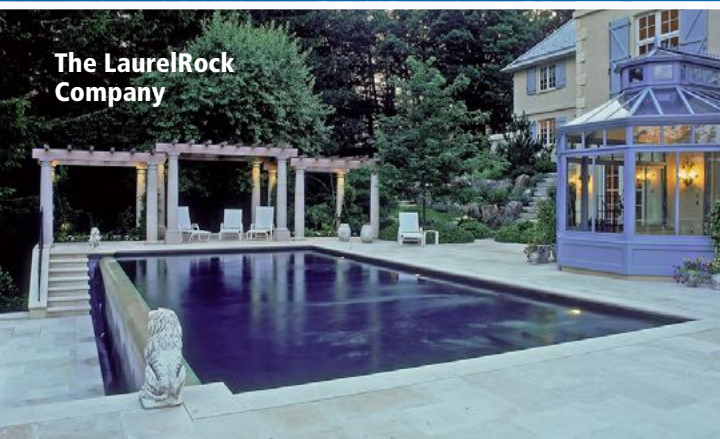


ASLA
CONNECTICUT

*WATER: Conservation,
Mitigation, Creation &
Restoration*



William Kenny Associates



The LaurelRock Company



UConn CLEAR



Anthony Archer-Wills
Water Garden Design

The Connecticut Chapter of the American Society of Landscape Architects presents:



Event Sponsor:



2019 RESIDENTIAL DESIGN EXPO

WATER: Conservation, Mitigation, Creation & Restoration

A continuing education program for landscape architects and peer design professionals

Date: Wednesday, October 30, 2019 / 8:00 a.m.-4:00 p.m.

Location: [Ethan Allen Hotel](#), 21 Lake Avenue Extension, Danbury, CT



CEUs: 6.0 PDH/HSW (LA CES) and 6.0 LU/HSW (AIA-CES)

Cost: \$125 Members of ASLA or AIA
\$165 Non-members / \$40 Full-time students (with ID)
Includes continental breakfast and lunch

[REGISTER ONLINE](#) OR complete the form below and mail back with payment by Friday, October 25th. Questions? Contact Jeff Mills at executivedirector@ctasla.org or (860) 454-8922.

Join landscape architects, peer practitioners, and green industry representatives at CTASLA's 8th annual Residential Design Expo. The half dozen moderated sessions presented here will focus on WATER — coastal, wetlands, stormwater, ponds, and lakes — providing design professionals with insights to help inform their practice. Panelists include landscape architects, allied professionals, and other specialists with experience working at the intersection of land and water. With 20-plus exhibitors, the day will also allow designers to learn about the latest products and technologies, and consult with manufacturers and suppliers about their projects. With learning opportunities for both residential and non-residential specialists, this program will appeal to design professionals of all stripes.

THANK YOU TO OUR SPONSORS!

(click logos to visit sponsor websites)



EXPO SPONSORS:



BREAK SPONSORS:



BREAKFAST SPONSOR:



ADDITIONAL EXHIBITORS:

Ardex Americas • Chameleon Ways, Inc. • EJ Prescott • INTEX Millwork Solutions • Solecol Products, Inc. • Royal Perla • Northern Designs • O&G Industries, Inc. • US Glass Fence • Phil Gallo and Associates LLC • Reflex Lighting • SavATree • Tri-State Flexi-Pave • Winterberry Group

REGISTRATION FORM

[Register online](#) with your credit card or complete this form and return with your check (payable to "CTASLA") and mail to:

CTASLA
c/o J.M. Communications
35-31 Talcottville Road, Ste. 318
Vernon, CT 06066

Deadline: October 25, 2019

(Note: no refunds after Oct. 25)

Name: _____

ASLA or AIA Member Number (if applicable): _____

Company: _____

Mailing Address: _____

City/State/Zip: _____

Email Address: _____

___ Member(s) @ \$125 each = \$ _____ total

___ Non-Member(s) @ \$165 each = \$ _____ total

___ Full-time student(s) @ \$40 each = \$ _____ total

See the following pages for course descriptions and bios of our speakers.

Schedule:**8:00-8:50 Registration / Continental Breakfast / EXPO****8:50-9:00 Welcome & Introductions***Louis Fusco, ASLA – Louis Fusco Landscape Architects***9:00-9:55 Coastal**

*Panelists: Azure Dee Sleicher – Race Coastal Engineering
Brian Golembiewski – CT Dept. of Energy and Environmental Protection
Kristen Motel, Esq. – Cuddy and Feder LLP*

Working within the coastal shoreline zones. A coastal engineer, land use and environmental attorney, and a state regulatory environmental analyst will discuss planning, programming, regulatory overview, permitting, stormwater, shoreline stabilization, and sustainable solutions.

9:55-10:50 Wetlands

*Panelists: Bill Kenny – William Kenny Associates
Beth Evans – Evans Associates Environmental consultants*

Wetland identification, regulation and latest mitigation and restoration processes. A focus on restorative planting options that strike a balance between conservation, stormwater management, and enhancing the quality and beauty of a place.

10:50-11:05 Break / EXPO**11:05-12:00 Ponds and Water Gardens**

*Panelists: Anthony Archer-Wills – Anthony Archer-Wills Water Garden Design
Diane Devore – Devore Associates*

Creating, restoring, and maintaining healthy water environments. A review and presentation of case study projects, with focus on methodology, regulations, permitting, creative possibilities, and latest technology.

12:00-12:45 Lunch / EXPO**12:45-1:40 Water Conservation and Latest Trends in Landscape Management**

*Panelists: Burt DeMarche – The Laurelrock Company
Jason Springer – Hoffman Landscapes
Bill Gallagher – Summer Rain Irrigation Company*

Designing with responsible environmental management as a driving force. Technological advances in general landscape maintenance systems, with special emphasis on water usage and irrigation advances.

1:40-2:35 Connecticut Stormwater Regulations

*Panelists: Amanda Ryan – UConn CLEAR
David Dickson – UConn CLEAR*

Current stormwater regulations and ways that landscape architects can improve water quality through low impact, innovative, responsible design at the community and residential level.

2:35-3:00 Break / EXPO / Door Prizes**3:00-3:55 Lake Shoreline Management**

*Panelists: Brian Wood – FirstLight Power
Lauren Richardson – FirstLight Power*

FirstLight is the largest hydroelectric generation company in Connecticut (managing over 200 miles of shoreline at its 10 facilities in the state) and the largest energy storage company in New England. This session will review regulations and restrictions, permitting, and best management practices.

3:55-4:00 Evaluation Forms / Certificates of Completion

Meet the Panelists:



Moderator: Louis Fusco, ASLA has been a registered landscape architect since 1984, licensed in New York, Connecticut, and Maryland. He began his career in Milan, Italy and New York City specializing in urban design, city parks, plazas, and playgrounds. His current

practice, Louis Fusco Landscape Architects, balances residential/estate design with commercial work, campus planning, and park design. Louis has been recognized with numerous ASLA awards (Connecticut and New York) and has been featured in professional journals and magazines.

Azure Dee Sleicher, PE is Vice President of Coastal Engineering at RACE Coastal Engineering. A coastal engineer with 20 years of practical experience in wave dynamics, sediment transport, hydraulics and scour assessment, her work includes analysis and design of seawalls, bulkheads and revetments, as well as living shorelines, beach nourishment and other "green" infrastructure for flood and erosion control. She has designed recreation facilities including fishing piers, marinas, and boat ramps. Azure Dee rounds out her design experience with significant knowledge of state, federal, and local permitting for waterfront facilities and FEMA flood analysis, mapping, and compliance.

Brian Golembiewski is a Supervising Environmental Analyst in CT DEEP's Land & Water Resources Division, Bureau of Water Protection and Land Reuse. He is a registered Soil Scientist and Wetland Scientist with 28-plus years of permitting and enforcement work with CT DEEP, with expertise in coastal/inland regulation, erosion and sedimentation control, inland wetland delineation, coastal management, and wetland mitigation. His work involves regular coordination with municipal, state and federal agencies and staff, including Army Corps of Engineers, US EPA, CT DOT, DEEP Fisheries, DEEP Wildlife, CT Bureau of Aquaculture, CT Harbormasters, Town Harbor Management Commissions, and Town Planning/Zoning/Wetland Agents. Brian has a B.S. in Biological Sciences from the University of Connecticut.

Kristen Motel is an associate at Cuddy & Feder LLP. She focuses her practice in the areas of land use, zoning and development, energy and environmental, and telecommunications law. Kristen regularly represents national developers, retailers, homeowners, religious institutions, and the telecommunications industry before municipal and state land use, zoning and environmental agencies. Kristen received her juris doctor, magna cum laude, from Pace University School of Law with a Certificate in Environmental Law.

Bill Kenny, ASLA, PWS is the owner of William Kenny Associates LLC, a firm that provides Landscape Architectural and Ecological Consulting services, and the owner of NATIVE LLC, a native plant nursery. He has more than 30 years of experience with site and ecological planning and construction. Mr. Kenny's work includes the restoration, creation and enhancement of tidal and inland wetlands, waterways and upland habitats. Mr. Kenny is a Certified Professional Wetland Scientist, a Soil Scientist, and Professional Landscape Architect. He received a B.S. in Landscape Design from the University of Connecticut, a Master of Environmental Management from the Yale School of Forestry and Environmental Studies and he completed post-graduate studies in soil science at the University of Massachusetts.

Beth Evans established Evans Associates Environmental Consulting, Inc. in 1988 as a private consulting firm specializing in environmental planning, environmental permitting, and regulatory compliance. Working closely with landscape architects and engineers, Evans Associates specializes in assisting clients in incorporating environmentally sensitive sites into the planning process in a manner which assures regulatory compliance and ecological compatibility.

Anthony Archer-Wills, who began working in 1964, is among the world's foremost authorities on Water Gardening responsible for developing many of the techniques now frequently used in the construction of ponds and waterfalls. Anthony went on to lecture at Kew gardens, The New York Botanic Garden, Chelsea Physic Garden, The Royal Horticultural Society and universities and training facilities both in Europe and the USA. Having worked extensively in many parts of the world, Watershapes awarded Anthony the Joseph McClosky prize for outstanding achievement in the art and craft of Water Gardening, also, Anthony has been honored to receive the APLD Award of Distinction.

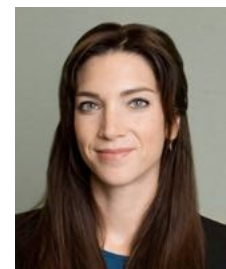
Diane Devore, ASLA is a registered landscape architect and principal of Devore Associates. She has a Bachelor of Science degree in Ornamental Horticulture from Delaware Valley College and a Master of Landscape Architecture from Cornell University. In 1991 Diane started her own firm, Devore Associates, which specializes in large-scale residential design. The firm has grown from a small office with Connecticut-based projects to a mid-sized firm with projects throughout the Northeast and Middle Atlantic states.



Azure Dee Sleicher



Brian Golembiewski



Kristen Motel



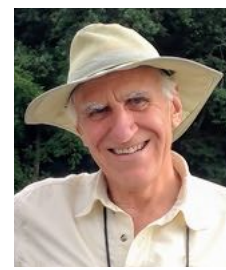
Bill Kenny



Beth Evans



Diane Devore



Anthony Archer-Wills

Over the past 26 years, **Burt DeMarche, LEED AP** has led The LaurelRock Company, which focuses on residential landscape design/build and property maintenance. The LaurelRock Company is honored to have received over 25 local and national awards. After founding the company with his father in 1993, Burt earned accreditation as a Landscape Industry Certified Manager from the National Association of Landscape Professionals (NALP). He is an active member of the Board of Directors for the NPO Come Alive Outside, a licensed State of Connecticut Custom Grounds Supervisor, and a Connecticut Nursery and Landscape Association (CNLA) Accredited Nursery Professional. Burt earned his degree in Horticulture from UConn's College of Agriculture and Natural Resources.

A love of the outdoors and everything it has to offer is what brought **Jason Springer**, Irrigation Manager for Hoffman Landscapes, to the industry. He started as part of an installation/landscape construction team before getting into irrigation and water management. A quick learner who is able to think outside the box when it comes to problem solving, Jason has helped grow Hoffman's irrigation services during his tenure with the company. His strong attention to detail and desire for quality is what drives and motivates Jason. He is a hands-on manager with his crews. Jason is currently responsible for overseeing all of Hoffman Landscapes installation and maintenance of both new and existing water management systems. Jason holds a CT J3 Irrigation license.

Bill Gallagher has been in the irrigation industry for almost 40 years, after a short career in criminal justice with the Greenwich Police Force. After realizing his passions lay in nature, and recognizing a need for homeowners to maintain their beautiful landscaping, Bill opened Summer Rain Sprinkler Systems in 1981. Bill is intent on making sure that Summer Rain customers receive the best service possible. In 1982, he attended the College of Irrigation Knowledge in Dallas, Texas. And as past president of the Connecticut Irrigation Contractors Association, Bill helped with the process of licensing contractors to further legitimize the industry.

Amanda Ryan is a Municipal Stormwater Educator primarily responsible for statewide outreach and education to communities and institutions regulated by the state Municipal Separate Stormwater Sewer

Systems (MS4) general permit. Amanda has experience in regional planning, municipal conservation, and served two tours as an active duty Coast Guard officer. Amanda is a graduate of the U.S. Coast Guard Academy with a B.S. in Marine and Environmental Sciences. She received a Masters of Environmental Science and Management from the University of Rhode Island.

Dave Dickson is a faculty member of the UConn Center for Land Use Education and Research (CLEAR) and an Associate Extension Educator in the Department of Extension in the College of Ag, Health and Natural Resources. As the Co-Director of the NEMO program at CLEAR, he works primarily on municipal stormwater management and low-impact development issues, but also provides outreach and training focused on mobile mapping technologies as a member of CLEAR's Geospatial Training Program. He is the co-creator of the Rain Garden smartphone app and National LID Atlas. When pressed, or convenient, he will admit to being a lawyer by training, although not by practice or inclination.

Brian D. Wood is Manager of Land and Recreation for FirstLight Power. He is a Soil Scientist and Professional Wetland Scientist and a trained arborist with 20-plus years of field experience constructing, permitting, and reviewing site plans to ensure that natural resources along lake and river shorelines are preserved and protected during development. FirstLight Power is the largest hydroelectric generation company in the state and the largest energy storage company in New England. FirstLight manages 200 miles of shoreline at its 10 facilities in Connecticut. Brian has a B.S. in Natural Resource Management Engineering from the University of Connecticut.

Lauren Richardson has a BS of Landscape Architecture from Cornell University and 30-plus years experience in site planning, landscape design, and land use regulation and plan review. Following practice as a landscape architect and zoning official in the earlier part of her career, Lauren's work focused on estate and high-end residential designs, project management, and installations. Lauren joined FirstLight Power as a Land Manager six years ago and currently provides permit application guidance, site and landscape plan review, and shoreline compliance assessments as Senior Land & Compliance Specialist.



Burt DeMarche



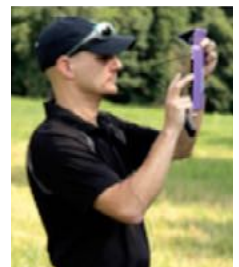
Jason Springer



Bill Gallagher



Amanda Ryan



Dave Dickson



Lauren Richardson



Brian Wood